

# TCW098 Vandalite

## Vandalite TCW098

Vandalite is a surface mounted fluorescent luminaire that, as its name implies, is a tough, dust and watertight product for situations where semi-outdoor exposure and vandalism can be a problem. The Vandalite has an IP65 rating, being totally dustproof and waterproof. Its robust construction makes it virtually vandal-proof. The body is injection moulded, glass filled nylon for long life and added strength. The reflector is of pressed prepainted steel with integral gear and rota-lock lampholders for 1xTL5 14W lamp or with moulding and posts for 2xPL 18W or 1xPL 36W lamps.

### Features

- Dust- and water- protected, extreme impact resistance
- Optimum light distribution & performance
- Easy installation & maintenance

### Application

- Schools
- Public amenity areas
- Prisons
- Industrial sites
- Car parks

### Specifications

<b>Type</b>	TCW098
<b>Light source</b>	Fluorescent: - 1x MASTER TL5 HE / G5 / 14W
<b>Lamp included</b>	Yes (light color 840)
<b>Ballast</b>	Electronic, High Frequency 220 - 240 V / 50 - 60 Hz: - High Frequency (HF)
<b>Reflector</b>	White without louvre (WR)
<b>Optical cover</b>	Polycarbonate bowl (PC)
<b>Options</b>	Lighting control: PE Cell 208-277 V 1 200 W Fuse: 250 V 3.15 A

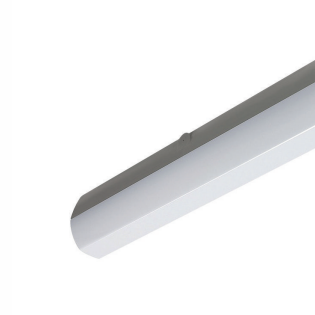
<b>Connection</b>	SCREW connector (SCREW)
<b>Material</b>	Housing: nylon Cover: polycarbonate Reflector: steel with white painting
<b>Installation</b>	Individual; screw mounting Operating temperature: -15°C < Ta < 35°C
<b>Accessories</b>	Mounting kits

# Vandalite TCW098

## Versions



TCW098 Vandalite



TCW098 Vandalite

### Approval and Application

Ingress protection code	IP65
-------------------------	------

### Operating and Electrical

Input Voltage	220 V
---------------	-------

### General Information

Protection class IEC	Safety class I (I)
Compensation circuit	-
Gear	HFS
Kombipack	Lamp(s) included
Lamp family code	TL5
Lamp power	14 W
Number of light sources	1

### General Information

Order Code	Full Product Name	Optical cover/lens type	Finish
910403630084	TCW098 1xTL5 14W K HFS CL	No	Clear
910403630085	TCW098 1xTL5 14W K HFS OP	-	-

