



MSD Platinum – The power to light your creativity

MSD Platinum (Touring/Stage)

The MSD Platinum lamps open up new levels of creative freedom in entertainment lighting, with powerful, compact and brilliantly intense light. Their compact, lightweight design provides the freedom to create smaller, lighter luminaires – for use at any location on stage. And their short arc, high color temperature and innovative reflector produce a sparkling, high beam intensity for outstanding color reproduction. They also offer long and reliable lifetime, high efficacy and fast replacement times. It all adds up to an intensely exciting creative experience.

Benefits

- High beam intensity
- Freedom to create smaller and lighter fixtures
- High perceived brightness
- A long and reliable performance

Features

- Very short arc
- Compact system
- High correlated color temperature
- Philips Platinum technology

Application

- Events
- Shows/Theater
- Touring/Stage

MSD Platinum (Touring/Stage)

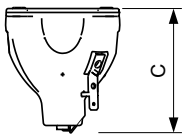
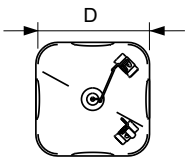
Warnings and Safety

- A lamp breaking is extremely unlikely to have any impact on your health. If a lamp breaks, ventilate the room for 30 minutes and remove the parts, preferably with gloves. Put them in a sealed plastic bag and take it to your local waste facilities for recycling. Do not use a vacuum cleaner.

Versions



Dimensional drawing



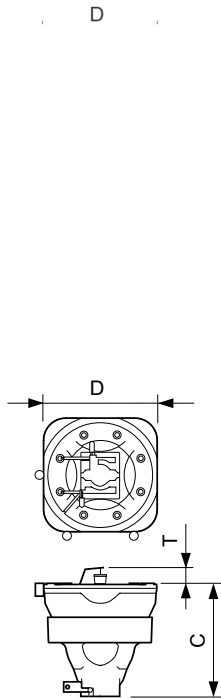
D

Product	D (max)	O	C (max)
MSD Platinum 15 R 1CT/8	58.5 mm	1.3 mm	66.4 mm
MSD Platinum 16 R 1CT/8	58.5 mm	1.3 mm	66.4 mm

Product	D (max)	T (max)	O	C (max)
MSD Platinum 14 R 1CT/8	51.5 mm	6.8 mm	0.95 mm	57.1 mm
MSD Platinum 5 R 1CT/8	51.4 mm	6.8 mm	1.0 mm	57.1 mm

MSD Platinum (Touring/Stage)

Dimensional drawing



Product	D (max)	O	C (max)
MSD Platinum 20 R 1CT/8	58.5 mm	1.2 mm	72 mm

Product	D (max)	T (max)	O	C (max)
MSD Platinum 17 RA 1CT/8	51.4 mm	10.0 mm	1.0 mm	63 mm
MSD Platinum 11 R 1CT/8	51.5 mm	10 mm	0.95 mm	53 mm

Controls and Dimming	
Dimmable	Yes
General Information	
Cap-Base	-
Main Application	Stage/Touring
Operating Position	UNIVERSAL
Light Technical	
Colour Code	2

Operating and Electrical

Order Code	Full Product Name	Voltage (Max)	Voltage (Min)	Power (Rated) (Nom)
928190805314	MSD Platinum 5 R 1CT/8	-	-	189 W
928196105314	MSD Platinum 14 R 1CT/8	-	-	280 W
928191605314	MSD Platinum 15 R 1CT/8	-	-	300 W
928195205314	MSD Platinum 16 R 1CT/8	-	-	330 W

Order Code	Full Product Name	Voltage (Max)	Voltage (Min)	Power (Rated) (Nom)
928191705314	MSD Platinum 11 R 1CT/8	80 V	55 V	250 W
928197305314	MSD Platinum 17 RA 1CT/8	-	-	350.0 W
928197205314	MSD Platinum 20 R 1CT/8	110 V	85 V	470 W

General Information

Order Code	Full Product Name	Life To 50% Failures (Nom)	System Description
928190805314	MSD Platinum 5 R 1CT/8	3000 h	Reflector-E20.6
928196105314	MSD Platinum 14 R 1CT/8	2000 h	Reflector-E20.6
928191605314	MSD Platinum 15 R 1CT/8	2000 h	na

Order Code	Full Product Name	Life To 50% Failures (Nom)	System Description
928195205314	MSD Platinum 16 R 1CT/8	1500 h	Reflector E21.9 TCM
928191705314	MSD Platinum 11 R 1CT/8	2000 h	Reflector-E20.9

MSD Platinum (Touring/Stage)

Order Code	Full Product Name	Life To 50% Failures (Nom)	System Description
928197305314	MSD Platinum 17 RA 1CT/8	1500 h	Reflector-E20.9

Order Code	Full Product Name	Life To 50% Failures (Nom)	System Description
928197205314	MSD Platinum 20 R 1CT/8	1500 h	Reflector E21.9 TCM

Light Technical

Order Code	Full Product Name	Correlated Colour	Colour Rendering	Luminous Flux (Min)	Luminous Flux (Nom)
		Temperature (Nom)	Index (Nom)		
928190805314	MSD Platinum 5 R 1CT/8	8000 K	-	7100 lm	7950 lm
928196105314	MSD Platinum 14 R 1CT/8	7800 K	-	-	12350 lm
928191605314	MSD Platinum 15 R 1CT/8	8000 K	-	11000 lm	13500 lm
928195205314	MSD Platinum 16 R 1CT/8	8000 K	-	14300 lm	16000 lm

Order Code	Full Product Name	Correlated Colour	Colour Rendering	Luminous Flux (Min)	Luminous Flux (Nom)
		Temperature (Nom)	Index (Nom)		
928191705314	MSD Platinum 11 R 1CT/8	7800 K	-	-	12000 lm
928197305314	MSD Platinum 17 RA 1CT/8	7000 K	85	-	15250 lm
928197205314	MSD Platinum 20 R 1CT/8	8000 K	-	-	22400 lm

