



UniFlood M

BVP340 72LED RGB 220V L75 40 DMX

UniFlood M - 6315 lm - 144 W - - K

UniFlood M is a modular, rectangular-shaped, cost-effective and exterior-rated architectural LED floodlight that is designed for façade, landscape and outdoor floodlighting applications. The robust mechanical design and highly efficient optical design make it ideal for illuminating multi-storey exterior facades, bridges landmarks and monuments. Available in white, monochromatic colours, RGB, RGBW and tunable white. Eight different spread lenses ranging from narrow spot, to wide flood and a DMX512/RDM control option available to give architects and designers the freedom to explore a wide range of concepts and design with no limitations.

Warnings and Safety

- For outdoor use only.

Product data

General Information	
Beam angle of light source	40 x 40 °
Lamp colour code	Red, green and blue
Light source replaceable	No
Number of gear units	1 unit
Driver/power unit/transformer	PSU [Power supply unit]
Driver included	Yes
Optical cover/lens type	FG [Flat glass]
Control interface	Dynamic DMX/RDM
Connection	Flying leads/wires and 2 push-in connectors 4-pole
Cable	Cable 0.5 m without plug 3-pole and 2 cables 0.5 m with connector 4-pole
Protection class IEC	Safety class I (I)

CE mark	CE mark
Operating and Electrical	
Input Voltage	220 to 240 V
Input frequency	50 to 60 Hz
Inrush current	65 A
Inrush time	0.5 ms
Power factor (min.)	0.9
Controls and Dimming	
Dimmable	Yes
Mechanical and Housing	
Housing material	Aluminum extruded

UniFlood M

Optical cover/lens material	Glass
Optical cover/lens finish	Clear
Overall length	134 mm
Overall width	205 mm
Overall height	750 mm
Colour	Dark Grey

Approval and Application

Ingress protection code	IP66 [Dust penetration-protected, jet-proof]
Mech. impact protection code	IK06 [1 J]

Initial Performance (IEC Compliant)

Initial luminous flux (system flux)	6315 lm
Luminous flux tolerance	+/-10%
Initial LED luminaire efficacy	44 lm/W
Lamp colour temperature	- K
Colour Rendering Index	-
Initial input power	144 W

Power consumption tolerance	+/-10%
-----------------------------	--------

Application Conditions

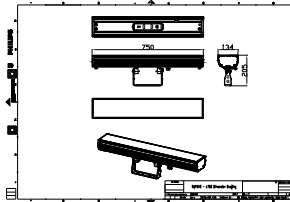
Ambient temperature range	-40 to +50 °C
Maximum dimming level	5% (1 to 10 V)

Product Data

Full product code	911401747812
Order product name	BVP340 72LED RGB 220V L75 40 DMX
Order code	911401747812
SAP numerator – quantity per pack	1
Numerator – packs per outer box	2
SAP material	911401747812
SAP net weight (piece)	8.499 kg



Dimensional drawing



BVP34x

