

# UniStrip G4

## BCP381 12LED 30K 24V 40 L50

UniStrip G4 - 842 lm - 12 W - 3000 K

UniStrip G4 is a surface-mounted, exterior-rated LED luminaire that is designed for façade and outdoor architectural lighting applications.; One family that fits all your needs, wall washing, grazing and also linear flood lighting.; The robust mechanical and unique optical designs make it ideal for illuminating buildings facades, bridges, overpasses and any application that requires a linear lighting solution.; Available in white, monochromatic colours, RGB, RGBW and tunable white and DMX control option available with up to 8 pixels (8IDs) to give architects and designers the freedom to explore a wide range of concepts and design with no limitations.

### Warnings and Safety

- For outdoor use only

### Product data

General Information	
Lamp colour code	Warm white
Light source replaceable	No
Driver included	No
Optical cover/lens type	CLFT [ Clear flat]
Luminaire light beam spread	40° x 40°
Control interface	-
Connection	2 push-in connectors 2-pole
Cable	2 cables 0.15 m with connectors 2-pole
Protection class IEC	Safety class III (III)
Flammability mark	F [ For mounting on normally flammable surfaces]
CE mark	CE mark
Light source engine type	LED

Serviceability class	Class B, the luminaire is equipped with some serviceable parts (when applicable): driver, control units, surge-protection device, front cover and mechanical parts
----------------------	--

Operating and Electrical	
Input Voltage	24 DC V
Input frequency	- Hz
Power factor (min.)	0.9

Controls and Dimming	
Dimmable	No

## UniStrip G4

### Mechanical and Housing

Housing material	Aluminum extruded
Optic material	Polymethyl methacrylate
Optical cover/lens material	Tempered glass
Fixation material	Aluminium
Mounting device	MBA [ Mounting bracket adjustable]
Optical cover/lens finish	Clear
Overall length	500 mm
Overall width	38 mm
Overall height	47 mm
Colour	Dark Grey

### Approval and Application

Ingress protection code	IP66 [ Dust penetration-protected, jet-proof]
Mech. impact protection code	IK06 [ 1 J]

### Initial Performance (IEC Compliant)

Initial luminous flux (system flux)	842 lm
Luminous flux tolerance	+/-10%
Initial LED luminaire efficacy	70 lm/W

Lamp colour temperature	3000 K
Colour Rendering Index	80
Initial chromaticity	4 SDCM
Initial input power	12 W
Power consumption tolerance	+/-10%

### Application Conditions

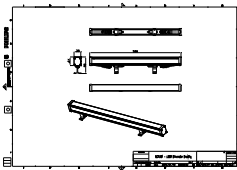
Ambient temperature range	-40 to +50 °C
---------------------------	---------------

### Product Data

Full product code	911401738662
Order product name	BCP381 12LED 30K 24V 40 L50
Order code	911401738662
SAP numerator – quantity per pack	1
Numerator – packs per outer box	15
SAP material	911401738662
SAP net weight (piece)	0.829 kg



## Dimensional drawing



BCP280/383/384/385 UNiStrip G3

