



# UniBar

## BCS341 36LED RGBNW 24V OC L30 3PX

UniBar - 110 lm - 4 W - - K

UniBar is a surface-mounted, exterior-rated and slim-sized linear LED direct view luminaire that is designed for façade and outdoor architectural lighting applications. The robust mechanical and unique optical design makes it ideal for buildings facades, media facades, bridges, overpasses and any application that requires a slim linear direct view lighting solution. Direct view spread lens, through wiring for end-to-end connection and DMX control option available with up to 10 pixels (10IDs) to give architects and designers the freedom to explore a wide range of concepts and design with no limitations. Available in white, monochromatic colours, RGB, RGBW and tunable white.

### Product data

General Information		Controls and Dimming	
Lamp colour code	Red, green, blue and white	Dimmable	Yes
Driver included	No		
Optical cover/lens type	O [ Opal]	Mechanical and Housing	
Control interface	Dynamic DMX	Housing material	Aluminum extruded
Connection	2 push-in connectors 5-pole	Optical cover/lens material	Polycarbonate
Cable	2 cables (0.2 m input + 0.1 m output) with 5-pole connectors	Overall length	300 mm
Protection class IEC	Safety class III (III)	Overall width	35 mm
CE mark	CE mark	Overall height	65 mm
		Colour	Silver
Operating and Electrical		Approval and Application	
Input Voltage	24 DC V	Ingress protection code	IP66 [ Dust penetration-protected, jet-proof]
Input frequency	- Hz	Mech. impact protection code	IK08 [ 5 J vandal-protected]
Power factor (min.)	0.9		

## Initial Performance (IEC Compliant)

Initial luminous flux (system flux)	110 lm
Luminous flux tolerance	+/-10%
Initial LED luminaire efficacy	27 lm/W
Lamp colour temperature	- K
Colour Rendering Index	-
Initial input power	4 W
Power consumption tolerance	+/-10%

## Application Conditions

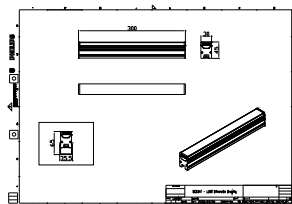
Ambient temperature range	-40 to +50 °C
---------------------------	---------------

## Product Data

Full product code	911401779362
Order product name	BCS341 36LED RGBNW 24V OC L30 3PX
Order code	911401779362
SAP numerator – quantity per pack	1
Numerator – packs per outer box	48
SAP material	911401779362
SAP net weight (piece)	0.291 kg



## Dimensional drawing



GC- Other LED

