



ClearFlood Large – The best solution for 1:1 retrofit

ClearFlood Large

ClearFlood Large is designed to meet the requirements of a wide range of floodlighting applications. It also includes all the necessary control features and interfaces to make it future-proof and even more efficient. ClearFlood Large lets you choose the exact number of lumens you need for your application. Incorporating extremely high-efficiency optics and state-of-the-art LEDs, it is a highly competitive solution offering an outstanding lux/euro ratio and energy savings of up to 40% (without the use of additional controls). The wide choice of optics ensures maximum application coverage. ClearFlood Large is easy to install – you simply plug it in and select the best option for your needs. Perfect for replacing conventional technology and enabling intelligent lighting control while retaining the same electrical installation and poles.

Benefits

- Fast payback and low Total Cost of Ownership with energy savings and minimum maintenance costs
- Multiple control options ensure increased efficiency with intelligent lighting
- Combination of lenses and flux options ensures high level of project flexibility

ClearFlood Large

Features

- Designed for 1:1 retrofit up to 1000 W HID
- Wide range of lumen packages between 30 klm and 65 klm
- Gear and PCB easy to replace
- Wide range of control options, such as CityTouch Ready, CLO, DALI, 1-10 V
- LEDs and optics deliver highest level of efficiency
- Components are 100% Philips
- Wide choice of optics to suit all applications: 3x Asymmetrical, 3x Road, 3x Symmetrical, versions with louver (optional)
- Optimized architecture for 4 kV surge (optional 10 kV), IP66 and IK08 protection

Application

- Airports
- Harbors
- Large recreational sports facilities
- Industrial areas
- Roundabouts and motorway junctions

Specifications

Type	BVP651:LEDxxx-4S BVP651i: additional options via a configurator
Light source	Integral LED-module
Power	Up to 553 W (+/- 11%) all CCT
Luminous flux	Up to 62,000 lm (NW/CW) (-/+7%)
Luminaire efficacy	Up to 130 lm/W (NW/CW)
Correlated Colour	3,000, 4,000 or 5,700 K
Temperature	
Colour Rendering Index	80 / 70 / 70
Lumen maintenance at 100,000 h median useful life*	up to L93
Control gear failure rate at 100,000 h median useful life	10%
Performance Ambient Temperature Tq	+25 °C
Operating temperature range	-40 to +45 °C
Driver	Built-in (self-ballasted LED-module) – NTC
Mains voltage	220-240 V AC / 50-60 Hz
Power factor	>0.95
Surge protection	4 kV as standard, 10 kV optional
Dimming	Dimming via external communication (DALI) Dimming via mains voltage (AmpDim) Dimming via DynaDimmer (5 steps) Constant Light Output (CLO) CityTouch-ready; GPRS antenna
Control system input	DALI
Options	Class I or II (MSP) Marine salt protection – 1,000 h (SPO) Swimming Pool Protection

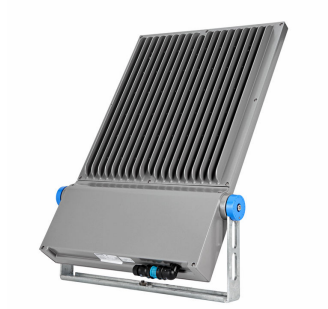
Optic	Asymmetrical, symmetrical and road optics
Optical element	Louvre for limited backlight cut-off (BL1 and BL2)
Optical cover	Clear tempered flat glass
Material	Die-cast aluminium
Colour	RAL9007 matt
Connection	Mains power via a waterproof connector (supplied) mounted on the projector and accepting cable diameters between 10 to 14 mm External control command DALI (D9), via the supplied waterproof connector (same as the mains supply) accepting cable diameters from 10 mm to 14 mm, or cable entry via 2 waterproof connectors supplied (in DALI/DALI out)
Maintenance	No internal cleaning required Direct access to LED engine modules and drivers Ballast can be replaced on request Spare part list available (glass, optics, bracket, protractor scale, PCB LED, connector)
Installation	U-shaped mounting bracket with a foot-print suitable for 3-point fixation by means of M20 bolts Vertical aiming from the horizontal: -90° / +90°, memory cap Standing-up or hanging-down mounting /U-bracket stirrup with standard nuts and bolts Protractor scale with intervals of 5°, memory cap Ready for CityTouch (based on the DALI protocol) with an external tray fixed on the bracket Projected area in horizontal position: at 0° 0.05 SCx: at 90° : 0.41 m², at 0° : 0.05 m², at 15° : 0.13 m² Max adjustment from the horizontal: -170 to +170°
Cable gland	External IP67 waterproof, plug-in connector (5-pin)
Remarks	CE, ENEC, RoHS, VDE-Ball proof

ClearFlood Large

Versions



Product details



OPDP_BVP650i_0013-Detail
photo



OPDP_BVP650i_0017-Detail
photo



ClearFlood Large

