



# Product Description

## Plusline Compact

Mains-voltage linear lamp giving white halogen light

### Benefits

- Bright halogen light
- Long lifetime

### Features

- Clear tubular quartz bulb
- Reinforced filament supports for maximum safety and shock resistance resulting in longer lifetime
- Two arc-preventing fuses for greater safety
- Excellent colour rendering
- Constant light output during life

### Application

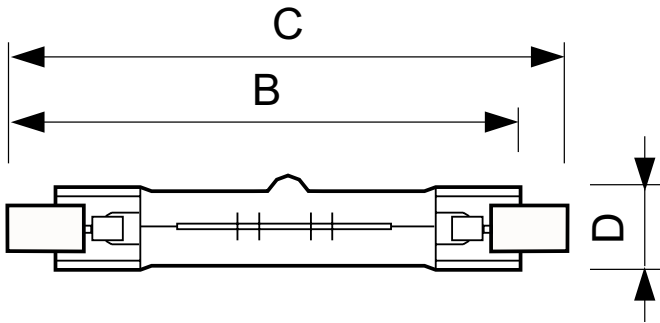
- Typically used in shop lighting applications
- Indoor: homes, offices, shops and museums
- Outdoor: billboards, car parks, security lighting and construction sites

### Versions



# Plusline Compact

## Dimensional drawing



Product	D (max)	B (max)	B	B (min)	C (max)
Plusline C 150W R7s 240V 1BC/12	15 mm	76.5 mm	74.9 mm	73.3 mm	78.3 mm
Plusline C 100W R7s 240V 1BC/10	15 mm	76.5 mm	74.9 mm	73.3 mm	78.3 mm

### Approval and Application

Energy Efficiency Label (EEL)	D
-------------------------------	---

### Controls and Dimming

Dimmable	Yes
----------	-----

### Operating and Electrical

Voltage (Nom)	240 V
---------------	-------

Starting Time (Nom)	0.0 s
---------------------	-------

### General Information

Cap-Base	R7S
Nominal Lifetime (Nom)	2000 h
Operating Position	UNIVERSAL
Rated Lifetime (Hours)	2000 h

### Luminaire Design Requirements

Bulb Temperature (Max)	900 °C
------------------------	--------

### Light Technical

Colour Rendering Index (Nom)	100
------------------------------	-----

### Mechanical and Housing

Bulb Finish	Clear
Bulb Shape	T3

## Operating and Electrical

Order Code	Full Product Name	Lamp Current (Nom)	Power (Rated) (Nom)
923919945709	Plusline C 150W R7s 240V 1BC/12	0.63 A	150 W
923920045792	Plusline C 100W R7s 240V 1BC/10	0.42 A	100 W

## Light Technical

Order Code	Full Product Name	Luminous Efficacy (rated) (Nom)	Luminous Flux (Nom)
923919945709	Plusline C 150W R7s 240V 1BC/12	16 lm/W	2400 lm

Order Code	Full Product Name	Luminous Efficacy (rated) (Nom)	Luminous Flux (Nom)
923920045792	Plusline C 100W R7s 240V 1BC/10	15.5 lm/W	1550 lm

## Plusline Compact

