



# UniFlood C

## BVP323 24LED RGB 220V 15 DMX

UniFlood C is a circular-shaped, exterior-rated and cost-effective architectural LED floodlight that is designed for façade, landscape and outdoor flood lighting applications. The robust mechanical design and high-efficiency optical design make it ideal for illuminating multi-storey exterior facades, bridges, landmarks and monuments. Available in white, monochromatic colours, RGB, RGBW and tunable white. Six different spread lenses, ranging from narrow spot to wide flood, and a DMX512/RDM control option available to give architects and designers the freedom to explore a wide range of concepts and design with no limitations.

### Warnings and Safety

- For outdoor use only

### Product data

| General Information           |  | Operating and Electrical                |  |
|-------------------------------|--|---|--|
| Lamp colour code              | Red, green and blue  | Flammability mark                       | F [ For mounting on normally flammable surfaces]   |
| Light source replaceable      | No   | CE mark                                 | CE mark  |
| Number of gear units          | 1 unit   | Constant light output                   | No   |
| Driver/power unit/transformer | PSDMX [ Power supply unit with DMX interface]                            | Number of products on MCB (16 A type B) | 4  |
| Driver included               | Yes  | LED engine type                         | LED  |
| Optical cover/lens type       | FG [ Flat glass]   | Serviceability class                    | Class B, the luminaire is equipped with some serviceable parts (when applicable): driver, control units, surge-protection device, front cover and mechanical parts |
| Luminaire light beam spread   | 15°  |   |  |
| Control interface             | Dynamic DMX/RDM  |   |  |
| Connection                    | Flying leads/wires and 2 push-in connectors 4-pole                       |   |  |
| Cable                         | Cable 0.5 m without plug 3-pole and 2 cables 0.5 m with connector 4-pole | Input Voltage                           | 220 to 240 V   |
| Protection class IEC          | Safety class I (I)   | Input frequency                         | 50 to 60 Hz  |
|                               |  | Inrush current                          | 60 A   |
|                               |  | Inrush time                             | 0.65 ms  |

# UniFlood C

|                     |     |
|---------------------|-----|
| Power factor (min.) | 0.9 |
|---------------------|-----|

## Controls and Dimming

|          |     |
|----------|-----|
| Dimmable | Yes |
|----------|-----|

## Mechanical and Housing

|                             |                                    |
|-----------------------------|------------------------------------|
| Housing material            | Aluminum die-cast                  |
| Optic material              | Polymethyl methacrylate            |
| Optical cover/lens material | Tempered glass                     |
| Fixation material           | Steel                              |
| Mounting device             | MBA [ Mounting bracket adjustable] |
| Optical cover/lens shape    | Flat                               |
| Optical cover/lens finish   | Clear                              |
| Overall length              | 315 mm                             |
| Overall width               | 262 mm                             |
| Overall height              | 169 mm                             |
| Overall diameter            | 262 mm                             |
| Colour                      | Dark Grey                          |

## Approval and Application

|                              |   |
|------------------------------|---|
| Ingress protection code      | IP66 [ Dust penetration-protected, jet-proof] |
| Mech. impact protection code | IK08 [ 5 J vandal-protected]                  |

## Initial Performance (IEC Compliant)

|                                     |         |
|-------------------------------------|---------|
| Initial luminous flux (system flux) | 2470 lm |
|-------------------------------------|---------|

|                                |         |
|--------------------------------|---------|
| Luminous flux tolerance        | +/-10%  |
| Initial LED luminaire efficacy | 49 lm/W |
| Lamp colour temperature        | - K     |
| Colour Rendering Index         | -       |
| Initial input power            | 50 W    |
| Power consumption tolerance    | +/-10%  |

## Application Conditions

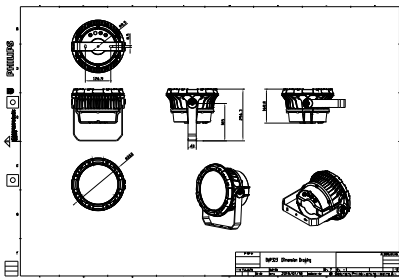
|                           |               |
|---------------------------|---------------|
| Ambient temperature range | -40 to +50 °C |
| Maximum dimming level     | 1%            |

## Product Data

|                                     |                              |
|-------------------------------------|------------------------------|
| Full product code                   | 911401740382                 |
| Order product name                  | BVP323 24LED RGB 220V 15 DMX |
| Order code                          | 911401740382                 |
| Numerator – quantity per pack       | 1                            |
| SAP numerator – packs per outer box | 2                            |
| Material no. (12 NC)                | 911401740382                 |
| Net Weight (Piece)                  | 5.199 kg                     |



## Dimensional drawing



BVP321/322/323/324

## UniFlood C

