



UniFlood M

BVP341 144LED RGBW 220V L75 40 DMX

UniFlood M is a modular, rectangular-shaped, cost-effective and exterior-rated architectural LED floodlight that is designed for façade, landscape and outdoor floodlighting applications. The robust mechanical design and highly efficient optical design make it ideal for illuminating multi-storey exterior facades, bridges landmarks and monuments. Available in white, monochromatic colours, RGB, RGBW and tunable white. Eight different spread lenses ranging from narrow spot, to wide flood and a DMX512/RDM control option available to give architects and designers the freedom to explore a wide range of concepts and design with no limitations.

Warnings and Safety

- For outdoor use only.

Product data

General Information	
Beam angle of light source	40 x 40 °
Lamp colour code	Red, green, blue and white
Light source replaceable	No
Number of gear units	2 units
Driver/power unit/transformer	PSU [Power supply unit]
Driver included	Yes
Optical cover/lens type	FG [Flat glass]
Control interface	Dynamic DMX/RDM
Connection	Flying leads/wires and 2 push-in connectors 4-pole
Cable	Cable 0.5 m without plug 3-pole and 2 cables 0.5 m with connector 4-pole
Protection class IEC	Safety class I (I)
CE mark	CE mark

Operating and Electrical	
Input Voltage	220 to 240 V
Input frequency	50 to 60 Hz
Inrush current	130 A
Inrush time	0.5 ms
Power factor (min.)	0.9

Controls and Dimming	
Dimmable	Yes

Mechanical and Housing	
Housing material	Aluminum extruded
Optical cover/lens material	Glass
Optical cover/lens finish	Clear
Overall length	294 mm
Overall width	225 mm

UniFlood M

Overall height	750 mm
Colour	Dark Grey
Approval and Application	
Ingress protection code	IP66 [Dust penetration-protected, jet-proof]
Mech. impact protection code	IK06 [1 J]
Initial Performance (IEC Compliant)	
Initial luminous flux (system flux)	14600 lm
Luminous flux tolerance	+/-10%
Initial LED luminaire efficacy	51 lm/W
Lamp colour temperature	- K
Colour Rendering Index	-
Initial input power	288 W
Power consumption tolerance	+/-10%

Application Conditions

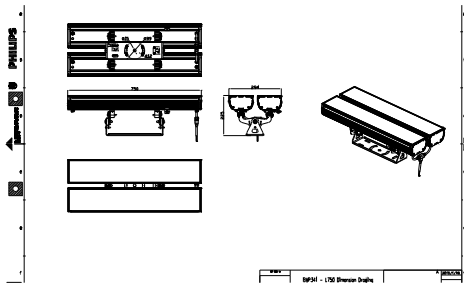
Ambient temperature range	-40 to +50 °C
Maximum dimming level	5% (1 to 10 V)

Product Data

Full product code	911401749572
Order product name	BVP341 144LED RGBNW 220V L75 40 DMX
Order code	911401749572
Numerator – quantity per pack	1
SAP numerator – packs per outer box	1
Material no. (12 NC)	911401749572
Net Weight (Piece)	17.499 kg



Dimensional drawing



BVP34x

