



# UniDot G2

## BGS301 G2 30LEDLP RGBNW 24V OSC DMX

UniDot G2 is a surface-mounted, exterior-rated and compact-sized architectural LED direct-view dot lighting luminaire that is designed for façade and outdoor lighting applications. The robust mechanical and unique optical covers make UniDot G2 ideal for building facades, bridges, theatres, amusement parks and recreational centres. Available in white, monochromatic colours, RGB, RGBW and tunable white. Three optical cover options and a DMX control interface is available to give architects and designers the freedom to explore a wide range of concepts and design with no limitations.

### Product data

General Information	
Lamp colour code	Red, green, blue, amber and white
Light source replaceable	No
Driver/power unit/transformer	PSU-E [ Power supply unit external (PSU)]
Driver included	No
Optical cover/lens type	Polycarbonate bowl/cover spherical
Luminaire light beam spread	150°
Control interface	Dynamix DMX
Connection	2 push-in connectors 5-pole
Cable	2 cables 0.3 m with connector 5-pole
Protection class IEC	Safety class III (III)
Flammability mark	F [ For mounting on normally flammable surfaces]
CE mark	CE mark
LED engine type	LED
Serviceability class	Class B, the luminaire is equipped with some serviceable parts (when applicable): driver, control units, surge-protection device, front cover and mechanical parts

Light Technical	
Standard tilt angle post-top	-
Standard tilt angle side entry	-
Operating and Electrical	
Input Voltage	24 DC V
Input frequency	- Hz
Power factor (min.)	0.9
Controls and Dimming	
Dimmable	Yes
Mechanical and Housing	
Housing material	Aluminum die-cast
Optical cover/lens material	Polycarbonate
Mounting device	No [ -]
Optical cover/lens shape	Hemispherical
Optical cover/lens finish	Opal
Overall length	111 mm

## UniDot G2

Overall width	100 mm
Overall height	67 mm
Overall diameter	100 mm
Colour	Dark Grey

### Approval and Application

Ingress protection code	IP66 [ Dust penetration-protected, jet-proof]
Mech. impact protection code	IK06 [ 1 J]

### Initial Performance (IEC Compliant)

Initial luminous flux (system flux)	154 lm
Luminous flux tolerance	+/-10%
Initial LED luminaire efficacy	26 lm/W
Lamp colour temperature	- K
Colour Rendering Index	-
Initial input power	6 W
Power consumption tolerance	+/-10%

### Application Conditions

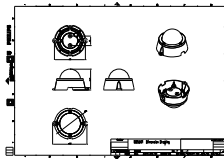
Ambient temperature range	-40 to +50 °C
Maximum dimming level	1%

### Product Data

Full product code	911401752662
Order product name	BGS301 G2 30LEDLP RGBNW 24V OSC DMX
Order code	911401752662
Numerator – quantity per pack	1
SAP numerator – packs per outer box	24
Material no. (12 NC)	911401752662
Net Weight (Piece)	0.270 kg



## Dimensional drawing



BGS301/302 UNI Dot

