



# UniBar

## BCS341 60LED RGBNW 24V OC L50 5PX

UniBar is a surface-mounted, exterior-rated and slim-sized linear LED direct view luminaire that is designed for façade and outdoor architectural lighting applications. The robust mechanical and unique optical design makes it ideal for buildings facades, media facades, bridges, overpasses and any application that requires a slim linear direct view lighting solution. Direct view spread lens, through wiring for end-to-end connection and DMX control option available with up to 10 pixels (10IDs) to give architects and designers the freedom to explore a wide range of concepts and design with no limitations. Available in white, monochromatic colours, RGB, RGBW and tunable white.

### Product data

General Information		Controls and Dimming	
Lamp colour code	Red, green, blue and white	Dimmable	Yes
Driver included	No		
Optical cover/lens type	O [ Opal]	Mechanical and Housing	
Control interface	Dynamic DMX	Housing material	Aluminum extruded
Connection	2 push-in connectors 5-pole	Optical cover/lens material	Polycarbonate
Cable	2 cables (0.2 m input + 0.1 m output) with 5-pole connectors	Overall length	500 mm
Protection class IEC	Safety class III (III)	Overall width	35 mm
CE mark	CE mark	Overall height	65 mm
		Colour	Silver
Operating and Electrical		Approval and Application	
Input Voltage	24 DC V	Ingress protection code	IP66 [ Dust penetration-protected, jet-proof]
Input frequency	- Hz	Mech. impact protection code	IK08 [ 5 J vandal-protected]
Power factor (min.)	0.9		
		Initial Performance (IEC Compliant)	
		Initial luminous flux (system flux)	190 lm
		Luminous flux tolerance	+/-10%

# UniBar

Initial LED luminaire efficacy	25 lm/W
Lamp colour temperature	- K
Colour Rendering Index	-
Initial input power	7.5 W
Power consumption tolerance	+/-10%

## Application Conditions

Ambient temperature range	-40 to +50 °C
---------------------------	---------------

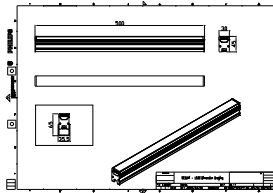
## Product Data

Full product code	911401779272
-------------------	--------------

Order product name	BCS341 60LED RGBNW 24V OC L50 5PX
Order code	911401779272
SAP numerator – quantity per pack	1
Numerator – packs per outer box	48
Material no. (12 NC)	911401779272
SAP net weight (piece)	0.457 kg



## Dimensional drawing



GC- Other LED

