



Plusline Compact

Plusline C 150W R7s 240V 1BC/12

Mains-voltage linear lamp giving white halogen light

Product data

| General Information | |
|------------------------------------|----------------------------|
| Cap base | R7S [R7s] |
| Burning Position | UNIVERSAL [Any/Universal] |
| Nominal lifetime (nom.) | 2000 h |
| Light Technical | |
| Lamp Luminous Flux 25°C EL (Nom) | 2400 lm |
| Lamp Luminous Efficacy EM (Nom) | 16 lm/W |
| Colour Rendering Index,horiz (Nom) | 100 |
| Operating and Electrical | |
| Power (Rated) (Nom) | 150 W |
| Lamp current (nom.) | 0.63 A |
| Starting time (nom.) | 0.0 s |
| Voltage (Nom) | 240 V |
| Controls and Dimming | |
| Dimmable | Yes |
| Mechanical and Housing | |
| Lamp Finish | Clear |

| | |
|----------------------|----|
| Cap-base information | 10 |
|----------------------|----|

Approval and Application

| | |
|-------------------------------|---|
| Energy efficiency label (EEL) | D |
|-------------------------------|---|

Luminaire Design Requirements

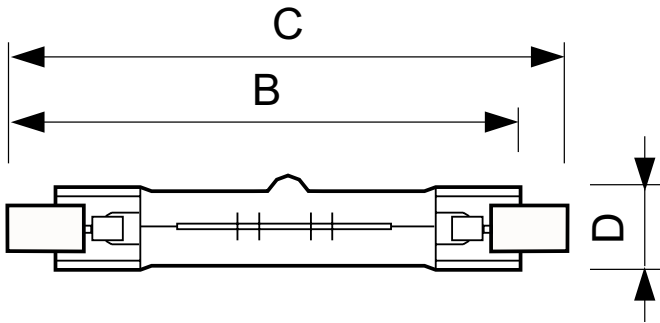
| | |
|--------------------------|--------|
| Bulb temperature (max.) | 900 °C |
| Pinch temperature (max.) | 350 °C |

Product Data

| | |
|-------------------------------------|---------------------------------|
| Full product code | 871150090174300 |
| Order product name | Plusline C 150W R7s 240V 1BC/12 |
| EAN/UPC – product | 8711500901743 |
| Order code | 923919945709 |
| Numerator – quantity per pack | 1 |
| SAP numerator – packs per outer box | 12 |
| Material no. (12 NC) | 923919945709 |
| Net Weight (Piece) | 0.008 kg |
| ILCOS code | HDG//RS-150-240-R7s-74.9 |

Plusline Compact

Dimensional drawing



| Product | D (max) | B (max) | B | B (min) | C (max) |
|------------------------------------|---------|---------|---------|---------|---------|
| Plusline C 150W R7s 240V 1BC/12 | 15 mm | 76.5 mm | 74.9 mm | 73.3 mm | 78.3 mm |

DEComp 150W R7s 240V T3 CL

