



# TORNADO

## TORNADO 20W WW E27 220-240V 1PF/6

The Helix range is a twist-shape compact fluorescent lamp, with optimal light distribution. It is available in 11W, 15W, 20W and 23W (25W), with lumen equivalence of 60W, 75W, 100W and 125W incandescent light bulb. It is also available in two color temperatures: warm white (2700K) and cool daylight (6500K). It is available in both 220-240V and 120-127V and able to operate under a wide voltage range (Power supply fluctuation). It consumes up to 80% less energy than the incandescent light bulb and lasts for 3 years.

### Warnings and Safety

- Breaking a lamp is extremely unlikely to have any impact on your health. If a lamp breaks, ventilate the room for 30 minutes and remove the parts, preferably with gloves. Put them in a closed plastic bag and take it to your local waste facilities for recycling. Do not use a vacuum cleaner.
- Compact fluorescent lamps have to be treated as special waste, they must be taken to your local waste facilities for recycling. The European Lighting Industry has set up an infrastructure, capable of recycling mercury, other metals, glass etc.

### Product data

General Information		Operating and Electrical	
Cap base	E27 [ E27]	Chromaticity coordinate Y (nom.)	420
Nominal lifetime (nom.)	8000 h	Colour Temperature, horizontal (Nom)	2700 K
Switching cycle	5,000X	Lamp Luminous Efficacy EM (Nom)	65 lm/W
Light Technical		Colour Rendering Index, horiz (Nom)	82
Colour Code	827 [ CCT of 2,700 K]	LLMF at end of nominal lifetime (nom.)	70 %
Lamp Luminous Flux 25°C EL (Nom)	1250 lm	Input frequency	50 or 60 Hz
Lamp Luminous Flux (Nom)	1250 lm	Power (Rated) (Nom)	20 W
Colour Designation	Warm white (WW)	Lamp current (nom.)	150 mA
Lumen maintenance 2,000 hours (nom.)	85 %	Starting time (nom.)	0.3 s
Lumen maintenance 5,000 hours (nom.)	75 %	Warm-up time to 60% light (min.)	5 s
Chromaticity coordinate X (nom.)	463	Warm-up time to 60% light (max.)	60 s

# TORNADO

Power factor (nom.)	0.6
Voltage (Nom)	220-240 V

## Controls and Dimming

Dimmable	No
----------	----

## Approval and Application

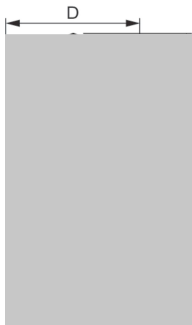
Energy efficiency label (EEL)	A
Mercury (Hg) content (nom.)	1.5 mg
Energy consumption kWh/1,000 hours	20 kWh

## Product Data

Full product code	871829113811200
-------------------	-----------------

Order product name	TORNADO 20W WW E27 220-240V 1PF/6
EAN/UPC – product	8718291138112
Order code	929689848306
Local code	TND20WWWES
Numerator – quantity per pack	1
SAP numerator – packs per outer box	6
Material no. (12 NC)	929689848306
Net Weight (Piece)	0.065 kg

## Dimensional drawing



Product	D (max)	C (max)	F (max)
TORNADO 20W WW E27 220-240V 1PF/6	56.5 mm	111.5 mm	47 mm

QSPIR-F 20W/827 E27 220-240V 50/60Hz

